

FOR EVENTS AND BUSINESSES...

- 1. Turbine Hall A
- 2. Turbine Hall B
- 3. Boiler house
- 4. Control Room A



Events such as the Brit Awards can be held in the Boiler house and Turbine Halls

Turbine Halls will serve as atriums for surrounding offices and studios like the Royal Agricultural Hall or like Billingsgate



A NEW PIECE OF CITY GROWS UP AROUND THE LANDMARK

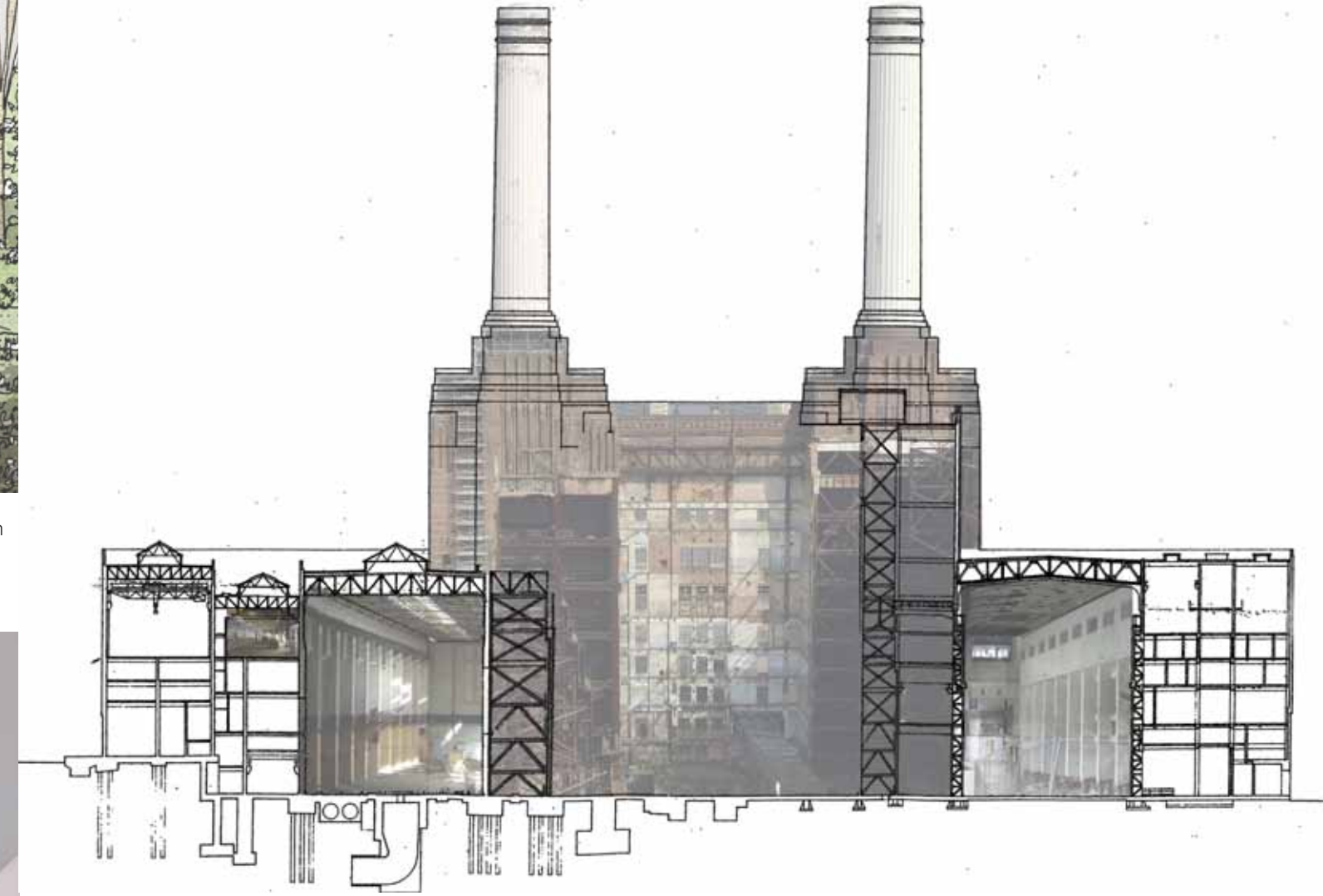


Location for possible new Northern Line Station Power Station New Riverside Square Existing waste transfer station Existing listed building New city blocks on an urban grid Landscape connections Shuttle bus from Battersea and Sloane Square Shuttle bus from Victoria and Vauxhall



INHABITING THE SHELL

A STEP-BY-STEP APPROACH TO SAVING BATTERSEA POWER STATION

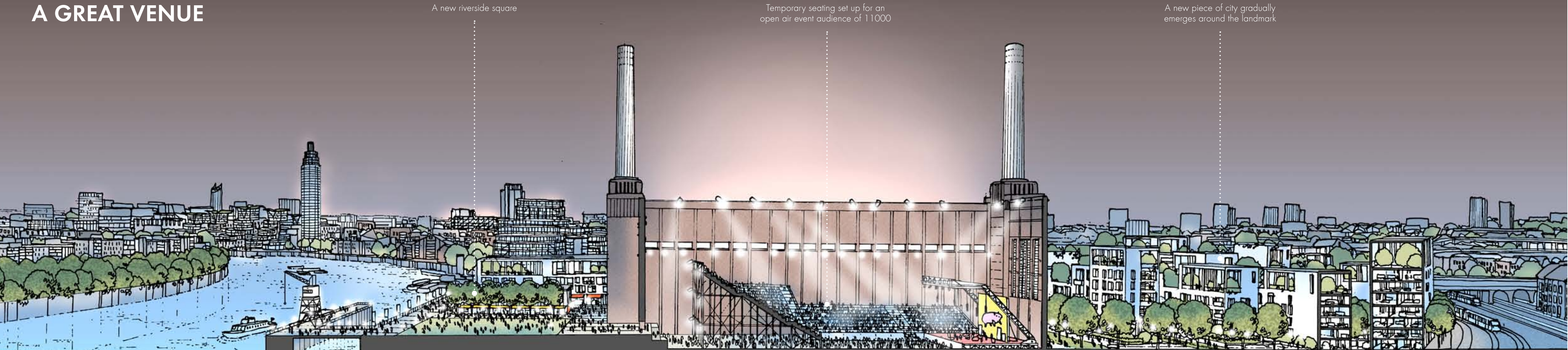


SAVE
BRITAIN'S HERITAGE

Allies and Morrison
Architects



A GREAT VENUE



A new riverside square

Temporary seating set up for an open air event audience of 11000

A new piece of city gradually emerges around the landmark

Using Battersea Power Station as an industrial shell. Firstly in its raw state, then gradually converting it...

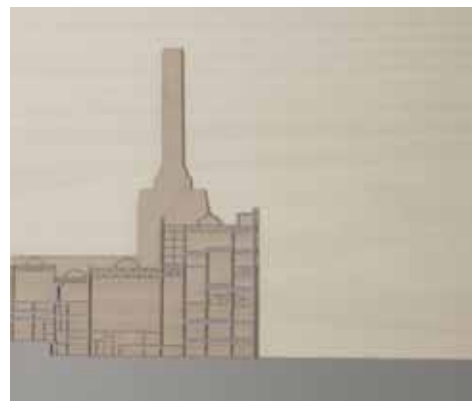
Finding a viable, suitable use for Battersea Power Station is a major challenge. Here we present a step by step approach in transforming the huge empty space between the four chimneys into a major events and concert venue.

Step 1 is to use it in a raw state with the minimum necessary structural support and repair, as an open air venue for concerts with a covered stage and temporary raked seating. Step 2 introduces a lightweight roof, a permanent raised floor with facilities below, permanent stage, side stages and raked seating. Step 3 introduces hospitality boxes for sponsors.

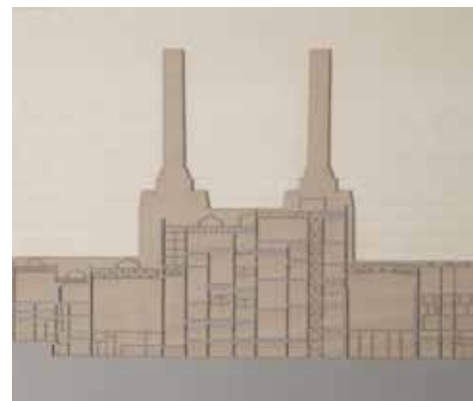
The arena will be substantially larger than the Albert Hall and will be comparable to the 1930's Wembley arena and thus suitable for pop concerts and events such as national television, film and music industry awards. We also believe that Battersea Power Station is a location and an address which will appeal to a wide range of

creative and enterprising organisations as a place to work. The two huge Turbine Halls will serve as open atriums which can be used for events, receptions, exhibitions and launches. Surrounding new buildings on the 40 acre site will be kept lower than in recent schemes, providing a better contrast to the awesome size of the power station and a

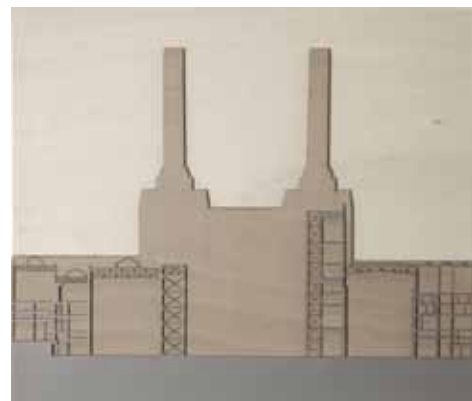
more human scale. They could be built in small self-contained phases to an agreed masterplan. The Grade 2 listed Water Pumping Station will also be retained. Support us in giving Battersea Power Station a new life as one of London's most thrilling landmarks with regular public access and numerous major events



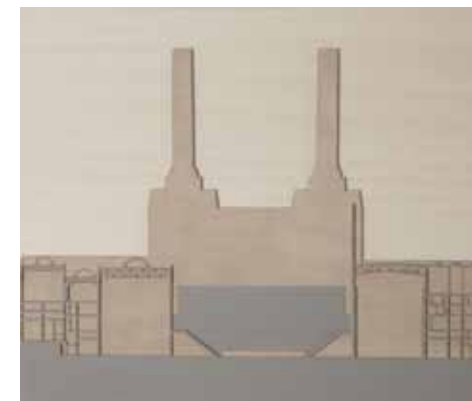
Power Station A 1933



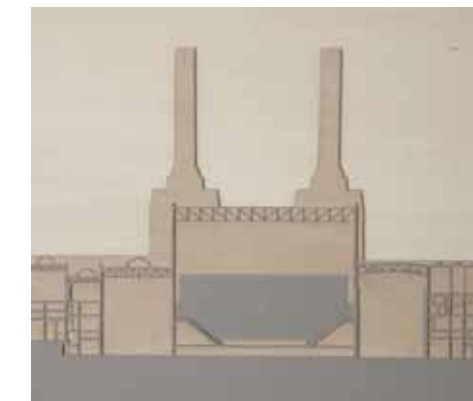
Power Station A+B 1955



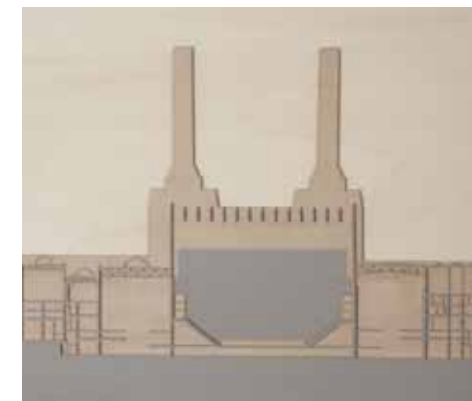
Power Station now with unroofed boiler house



Boiler house cleared, stabilised and used for open air events 2014



Boiler house with raised floor, permanent stage and lightweight roof 2020



Power Station with permanent arena and fully inhabited 2030